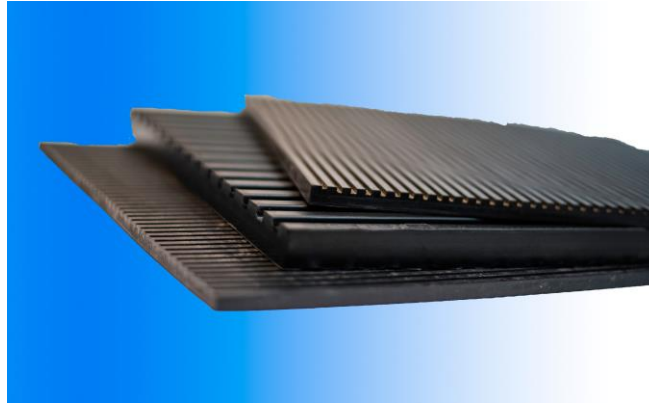
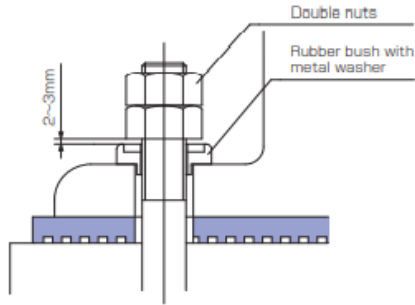


■ Instruction image



**KHL**

Product number	Hardness spring (JIS)	Material	Standard dimensions mm	Permissible load N/mm <sup>2</sup> (kgf/cm <sup>2</sup> )	Typical applications
KH-8	60	Natural rubber	300× 300×8t	1.1 (1.5)	Freezing machine, Chiller Cooling tower Air handling unit Packaged air conditioner Ventilator Pump Compressor Transformer Machine tool Forging machine Business equipment
KH-8CR		Chloroprene rubber			
KH-10	60	Natural rubber	300× 300×10t	1.1 (1.5)	
KH-10CR		Chloroprene rubber			
KH-20	75	Natural rubber	305× 305×20t	1.0 (10.0)	
KH-20CR		Chloroprene rubber			
KHL-10-100	50	Natural rubber	100×1000×10t	0.6 ( 6.0)	
KHL-10-100-5M			100×5000×10t		
KHL-10-150			150×1000×10t		
KHL-10-150-5M			150×5000×10t		
KHL-10-300			300×1000×10t	0.3 ( 3.0)	
KHL-15-100			100×1000×15t		
KHL-15-100-5M			100×5000×15t		
KHL-15-150			150×1000×15t		
KHL-15-150-5M			150×5000×15t		
KHL-15-300			300×1000×15t		

Temperature range Natural rubber -30°C~50°C  
Chloroprene rubber -10°C~70°C

Notice:KHL-00-000-5M is adhesim type.

■ Selection chart

